



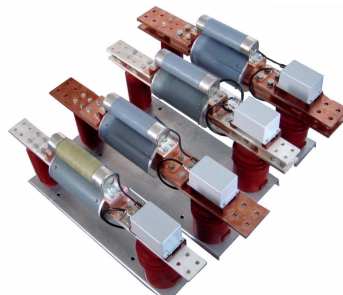
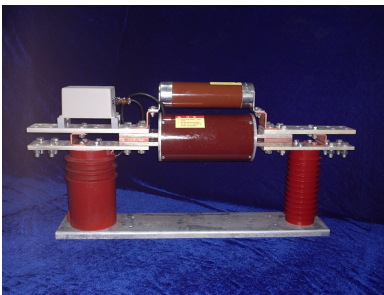
蓝河电气
LANHE ELECTRIC

DDX1系列短路电流限制器

DDX1 Series Of Fault Current Limiter

产品技术使用说明书

Operation Instruction for Product Technologies



陕 西 蓝 河 电 气 工 程 有 限 公 司

SHAANXI LANHE ELECTRIC ENGINEERING CO., LTD.

目 录

- 1 原理及特性
 - 1.1 DDX1 基本构成
 - 1.2 原理描述
 - 1.3 特性描述
- 2 主要技术参数
- 3 典型结构及工程实例
 - 3.1 分相使用实例
 - 3.2 组柜方案及实例
- 4 典型应用
 - 4.1 DDX1 用于旁路限流电抗器
 - 4.2 DDX1 用于使分段母线并列运行
 - 4.3 DDX1 用于发电机组上网保护
 - 4.4 DDX1 用于发电系统或大容量变压器低压侧

Contents

- 1 Principle And Characteristics
 - 1.1 The Basic Parts Of DDX1
 - 1.2 Description Of The Principle
 - 1.3 Description Of The Characteristics
- 2 The Main Technical Data
- 3 The Topical Structure And The Project Examples
 - 3.1 Examples Of Single-phase Application
 - 3.2 The Schemes To Form a Cubic And Some Examples
- 4 The Topical Applications
 - 4.1 Used in Reactor bypass
 - 4.2 Used in Busbar system
 - 4.3 Used in generator feeder
 - 4.4 Used in Power plant system or large capacity transformer system

DDX1— 世界上开断速度最快的开关设备

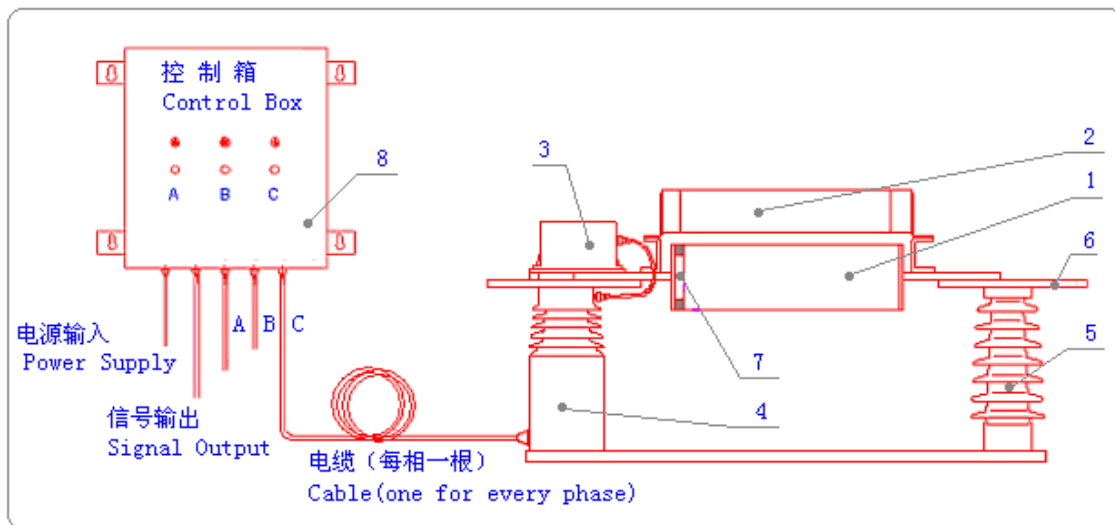
- 降低变电站造价
- 解决新建或扩建变电站时的短路问题
- 变电站互联的最优化解决方案
- 在大多数情况下是唯一的技术方案
- 有数百台设备的运行经验
- 使短路电流永远达不到预期峰值
- 短路电流在上升初期就被限制

DDX1— The world's fastest switching device

- Reduces substation cost
- Solve short-circuit problems in new substations and substation extensions
- Optimum solution for interconnection of switchboard and substation
- In most cases the only technical solution
- Tried and tested in hundreds of installations
- The peak short-circuit current will never be reached
- The short-circuit current is limited at the very first current rise

1 原理及特性 Principle And Characteristics

1.1 DDX1 基本构成 The Basic Parts Of DDX1



- 1—基于爆破切割技术的快速隔离器
- 2—特种高压限流熔断器
- 3—电子控制器
- 4—高压隔离变压器
- 5—支撑绝缘子
- 6—主导电母线
- 7—电流传感器
- 8—控制箱

图 1 基本构成

- 1--Fast-speed Disconnector Base on Demolish-Cutting Technology
- 2--Special Type High-Voltage Current-Limiting Fuse
- 3-- Electrical Controller
- 4-- High-Voltage Isolated Transformer
- 5-- Insulator
- 6-- Main Bus
- 7-- Current Transducer

从图 1 中可以看出 DDX1 短路电流限制器的基本构成，其中基于爆破切割技术的快速隔离器 1、特种高压限流熔断器 2、电子控制器 3 是 DDX1 的核心部件。快速隔离器 1 和熔断器 2 并联构成 DDX1 的导电主回路，电子控制器 3 控制快速隔离器 1 的爆破切割，控制箱 8 用于供电并指示 DDX1 的工作状态。

Fig1 The Basic Parts Of DDX1
 Fig1. The fast-speed disconnecter 1、the fuse 2 and the electrical controller 3 are the key parts of DDX1. The main passage of current is the parallel loop made up by the fast-speed disconnecter 1 and the fuse 2. The cutting action of the fast-speed disconnecter 1 is controlled by the electrical controller 3. The control box 8 is used to indicate the operating conditions of DDX1, also is the power supply of DDX1.

The Basic Parts Of DDX1 are show in
 1.2 原理描述 Description Of The Principle

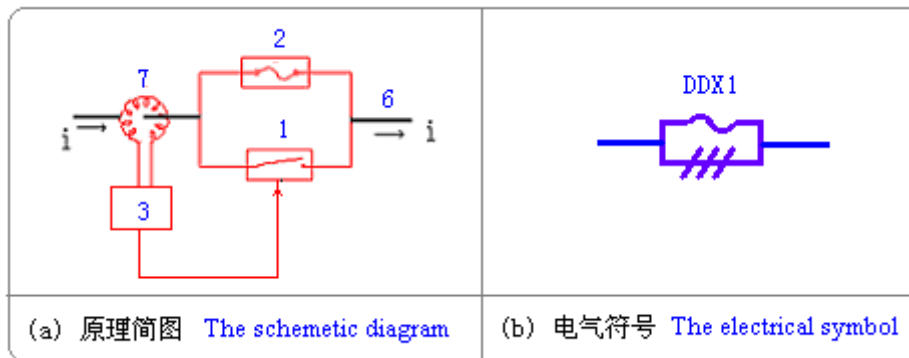


图 2 原理简图及电气符号

Fig2 The schemetic diagram and the electrical symbol

图 1 及图 2 中，控制箱 8 通过高压隔离变压器 4 给电子控制器 3 供电，并采用灯光、继电器接点、记数器等手段指示 DDX1 的工作状态。快速隔离器 1 和特种高压限流熔断器 2 在电气上是并联的，由于前者电阻为微欧级，后者电

阻为毫欧级，故正常运行情况下母线电流几乎全部流过快速隔离器 1。当系统发生短路事故时，置于快速隔离器 1 内部的电流传感器 7 将母线 6 中的短路电流信号通过信号电缆传递给高压侧电子控制器 3，由 3 进行信号的分析 and 处理。

若短路电流信号超过整定值，3 将输出点火脉冲信号，使快速隔离器 1 中的执行元件——爆破切割系统动作，将隔离器导电回路在几百微秒的时间内高速断开；在隔离器导电回路断开的过程中，故障电流转移到特种高压限流熔断器 2 中，由 2 最后开断短路电流、切除故障。

In fig1 and fig2,control box 8 supply power for the electrical controller 3 through the isolated transformer 4,and indicate the operating conditions of DDX1 by LED、LCD、the contacts of relays or counter etc。The main passage of current is the parallel loop made up by the fast-speed disconnecter 1 and the fuse 2 are in paralle and form the main passage of DDX1 current 。 But because the resistance of disconnecter 1 is in micro-ohm and the fuse 2 is in

milli-ohm,so almost all the current in main loop is flow through the disconnecter 1 in normal situation。The current signal is transmited to the controller 3 by current transducer 7 sealed in disconnecter 1 When a fault occurs, and it will be analysed in controller 3。The controller 3 will output a powerful tringle pulse to disconnecter 1 when the fault current signal exceeds its settings,and this result the demolish cutting in disconnecter 1,the current passage in disconnecter 1 is opened in several hundred microsecond, then the fault current is transfered to fuse 2 and be broken in several millisecond。

DDX1 开断短路电流的动作时序如图 3 所示：

Fig3 is the sketchmap of the time sequence of DDX1's current breaking process:

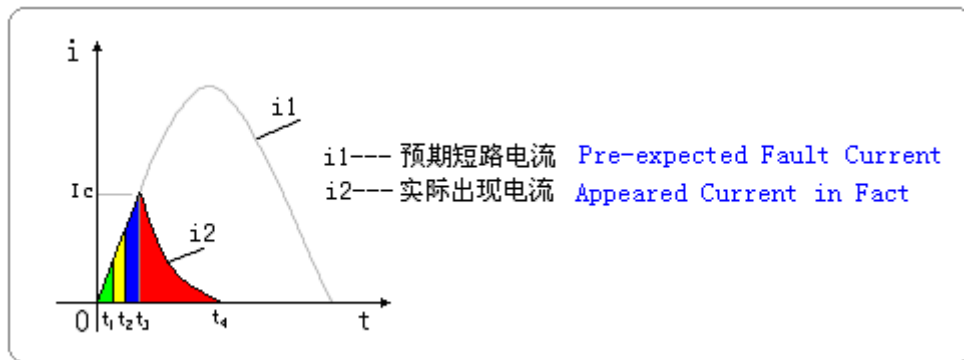


图 3 DDX1 限流器动作时序示意图

Fig3 The sketchmap of DDX1's breaking process

- $t=0$ 短路故障发生。
- $t=t_1$ 电子控制器探测到故障并建立点火信号，此时间与预期短路电流的大小、电子控制器动作整定值及短路发生时的相位角均有关系，一般大于 $600\mu s$ 。
- $t=t_2$ 快速隔离器断口打开，电流转移到限流熔断器中， (t_2-t_1) 约为 $200\mu s$ 。
- $t=t_3$ 熔断器开始起弧， (t_3-t_2) 为熔断器的弧前时间，一般为一个毫秒左右，图中的 I_c 即为限流峰值。
- $t=t_4$ 熔断器内电弧熄灭，故障电流被彻底开断， (t_4-t_3) 为熔断器的燃弧时间，一般小于 $5ms$ 。 (t_4-t_1) 称为全开断时间，小于 $10ms$ 。

图4为电力系统典型短路电流的波形及 DDX1 与普通断路器开断性能比较

- $t=0$, the short-circuit occurs.
- $t=t_1$, the response time of the electrical controller which is related with the value of the pre-expected fault current, the settings of the controller and the phase angle between current and voltage when short occurs, normally longer than 600 microsecond. During this time, the controller will found the fault and fire the trigle pulse.

- $t=t_2$, the disconnector is open, and the current is transferred to the fuse. t_2-t_1 is the response time of the demolish-cutting, normally in 200 microsecond.
- $t=t_3$, the fuse is arcing, I_c is named cut-off current. t_3-t_2 is the melting duration (pre-arcing time) of the fuse, normally in a millisecond.
- $t=t_4$, the arc in the fuse is extinguished, the fault current has been broken. t_4-t_3 is the arcing duration of the fuse, normally shorter than 5 millisecond. t_4-t_1 is named the total breaking duration of DDX1, shorter than 10 millisecond.

The topical fault current waveform in power system, also the comparision in breaking feature between DDX1 and normal

的示意图。可以看出，DDX1 在短路故障发生后几毫秒内完成限流开断，普通断路器则由于继电保护和操作机构的固有特性需要经过数个周波、在短路电流自然过零时才能开断。

circuit-breaker are shown in fig4. We can see, DDX1 just need several millisecond and have obvious current-limiting feature to break a fault current, but above a hundred milliseconds for normal circuit breaker because of its relay-protection and its operating mechanism with no current-limiting feature.

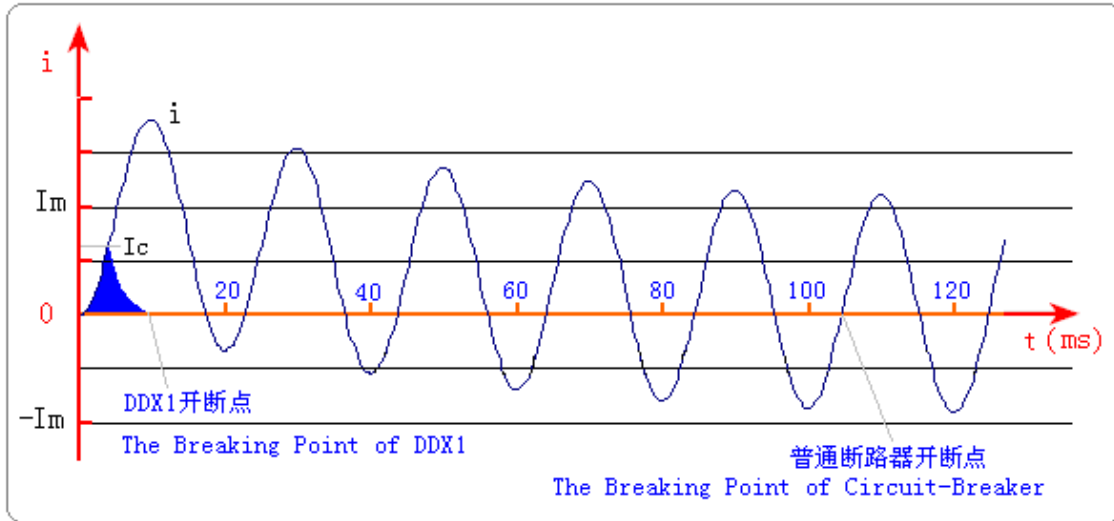


图 4 短路电流波形及 DDX1 与普通断路器开断性能比较示意图

Fig4 The topical current waveform in power system and the comparision sketchmap in breaking feature between DDX1 and nomal circuit-breaker

综合图 3 及图 4，可以看出：DDX1 可在预期短路电流尚未发展到峰值之前将其高速限流开断，实际通过电力设备的短路电流的峰值 I_c 在第一个半波被限制到预期短路电流峰值的 (15~50)%，短路电流的持续时间小于 10 ms，大大降低了故障电流的总能量 $\int i^2 dt$ (约为普通断路器的 1/200)，从而更有效地保护了电力主设备免受损坏。

根据电力系统短路电流的特性，DDX1 限流器的电子控制器设定了电流

Through fig3 and fig4,we can see: DDX1 can break the fault current at very first current rise before peak value of the pre-expected short-current is arrived. The

cut-off current I_c which flow through the electrical appratus actually is about (15~50) % of the peak value of the pre-expected short-current。The total breaking duration is less then 10ms, this result a deep reduction of the fault current energy $\int i^2 dt$ (about 1/200 of the value of a nomal circuit-breaker) and be more efficient to the protection of main electrical apparatus。

According to the feature of the fault current

瞬时值 i 及电流瞬时变化率 di/dt 两个启动判据。只有当两者同时大于设定值时才输出动作信号，从而增强了电子控制器的抗干扰能力，同时保证了 DDX1

的快速动作。DDX1 动作后的快速隔离器及特种限流熔断器的结构解剖图见图 5。

in power system, two settings for controller been recommended are the instantaneous value of current i and the instantaneous value of current variation

di/dt 。The controller can output the trigle pulse only when the two settings meet its demands simultaneously, thus enhance the ability to resist interference and ensure the fast operation of DDX1。The internal dissected structure pictures of the disconnecter and the fuse are shown in fig 5。

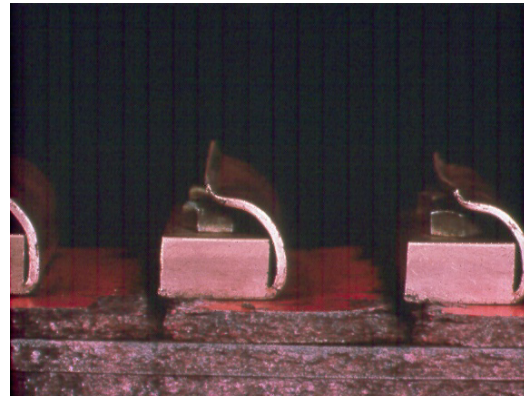
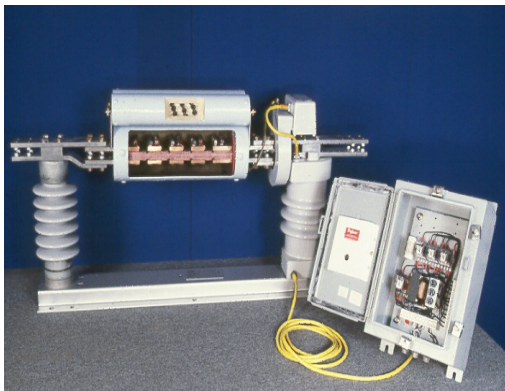


图 5 DDX1 动作后的形态照片

Fig5 The pictures after DDX1 is

done

1.3 特性描述（大容量、高速、限流）

Description Of the Characteristics

(1) High ability to break a fault current: 50kA~200kA

(2) High breaking speed: <10 ms

(3) Obvious current-limiting feature: 15%~50%

期水平的 15%~50%

- 额定电流 630A~6300A
- 额定电压 3.6kV~40.5kV
- 额定短路开断电流 50kA~200kA
- 全开断时间小于 10ms
- 限流特性：可将短路电流限制到预

■ 快速隔离器和熔断器全密封，可靠性高、

- Rated current: 630A~6300A
- Rated voltage: 3.6kV~40.5kV

- Rated short-breaking current: 50kA~200kA
- Total breaking duration:<10ms
- Obvious current-limiting feature:can limit the fault current to (15~50)% of its pre-expected value
- The fast-speed disconnecter and the fuse are sealed fully,less noise、high reliability and can 噪音小、可户内及户外使用
- 其动作行为可以通过电子控制器实现 电流及电流变化率双判据整定
- 电流传感器封装在快速隔离器内，达到了结构最简
- 世界上速度最快的短路电流开断设备
- 自主研发，专利技术
- 采用军事尖端技术：可控爆破切割技

术

- 可有效保护电力系统及主设备的安全
- 短路电流的克星，节能新产品
- be used indoor or outdoor
- The operaiont behavior can be set by i and di/dt
- The current transducer is sealed inside the disconnecter,achieve a simplist structure
- The world's fastest switching device
- Patent technology
- The military high-technology: demolish cutting technology under control
- More efficient to prectect the power system and the main equipments
- The powerful weapon to treat fault current,new apparatus to aviod energy loss

2 主要技术参数 **Main Technical Data**

表 1 主要技术参数
Of DDX1

Table1 **Main Technical Data**

序号 Number	项 目 Items	单位 Units	技术参数 Technical Data
1	额定电流 Rated current	A	630/2000/4000/6300
2	额定电压 Rated voltage	kV	3.6/7.2/12/20/40.5
3	额定频率 Rated frequency	Hz	50/60
4	额定预期短路开断电流 Rated pre-expected short-circuit breaking current	kA	50/63/100/150/200

5	全开断时间 The total breaking duration	ms	<10	
6	额定绝缘水平（工频/雷电） Rated Insulation Level (power frequency/lighting)	3.6kV	kV	/
		7.2kV	kV	23/60
		12kV	kV	42/75
		20kV	kV	50/125
		40.5kV	kV	95/185
7	截止电流/预期短路电流峰值 Cut-off Current/ the peak Value of Pre-expected Fault Current	%	15~50	
8	主回路直流电阻 DC resistance of main loop	$\mu\Omega$	<40	
9	动作电流整定范围 The range of settings	kA	5~60	
10	特种高压限流熔断器额定开断电流 Rated short-circuit breaking current of the special type HV current-limiting fuse	kA	63/100/150/200	
11	主回路额定短时耐受电流 Rated Short-time withstand current of main loop	kA/s	40/3	
12	主回路额定峰值耐受电流 Rated peak value withstand current of main loop	kA	100	
13	相间及相对地空气净距（户内时） Net distance between phases and to the earth(indoor)	mm	100/125/180/300	
14	支柱绝缘子爬电比距（额定线电压为准） The unit Creeping distance	mm/ kV	>25（3级污区）	
15	支柱绝缘子机械破坏负荷（弯曲及拉伸） Destroy mechanical load on insulator	kN	>12	

表 2 结构尺寸参数（仅作参考）

Table2 The Structure Dimensions(For

reference only)

额定电压 (kV)	额定电流 (A)	A (mm)	B (mm)	C(户内/户外) (mm)	D (mm)	E (mm)	F (mm)	G (mm)	Φ_1 (mm)	Φ_2 (mm)	重量 (kg)
3.6	800	1024	849	180	420	409	190	90	125	88	45
	1250~5000	1024	849		434	409			175		54/67
	8000	1125	905		445	460			205		75
7.2	630	1044	869	285/310	525	429	190	90	125	88	48
	1250~4500	1044	869		534	429			175		61/77
	7000	1145	970		545	525			205		87
12	630	1139	964	285/310	525	524	190	90	125	88	56
	1250~4000	1139	964		534	524			175		70/77
	6300	1240	1020		545	575			205		87
20	1250~3150	1316	1141	380/-	629	714	190	90	175	120	73/80
	5000	1417	1197		640	752			190		90
40.5	1500	1464	1289	390/430	668	849	220	110	175	120	82
	3150	1464	1289		686	849					220

注：单相宽度及重量与额定电流有关。

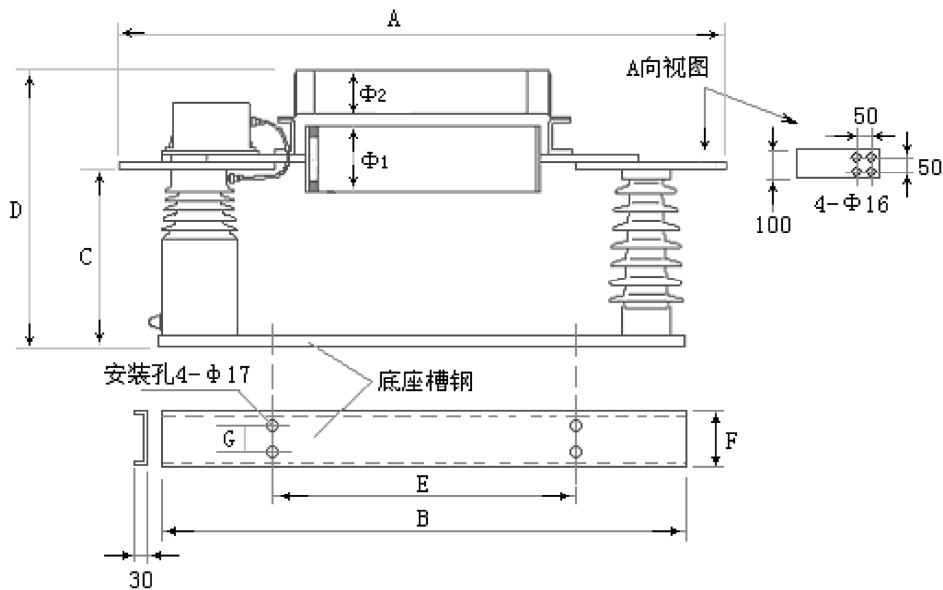


图6 结构参数示意图

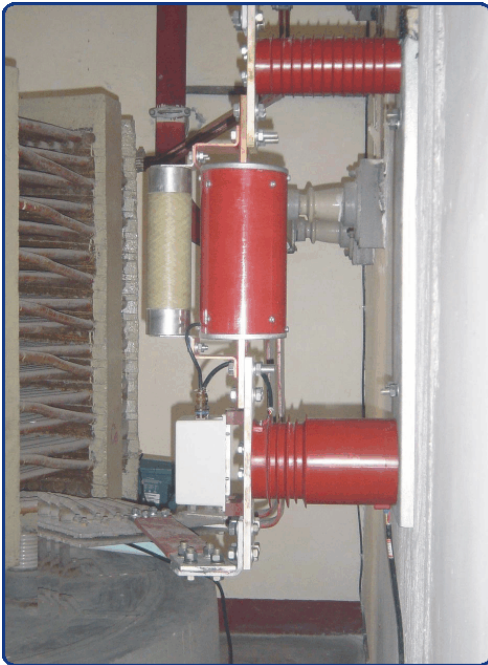
Fig6 The sketchmap of Structure Dimensions

3 典型结构及工程实例 The Topical Structure And The Project Examples

3.1 分相使用实例 Examples Of Single-phase Application



(a) 户外使用 outdoor use



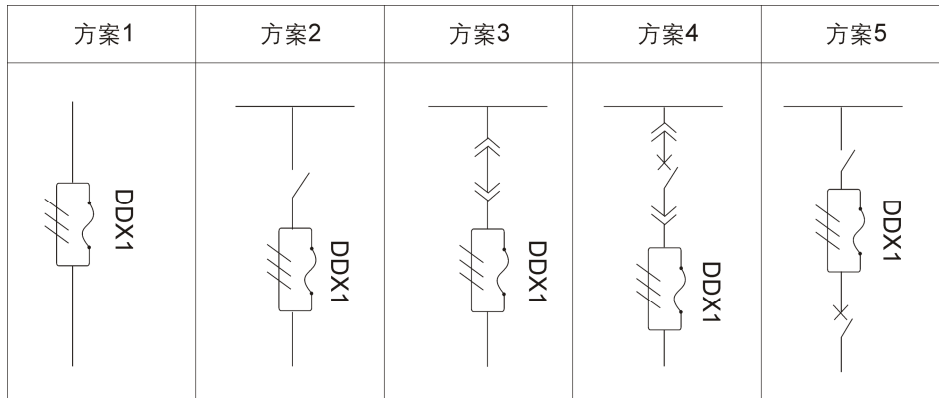
(b) 户内使用 indoor use

图6 DDX1 分相使用(旁路限流电抗器)

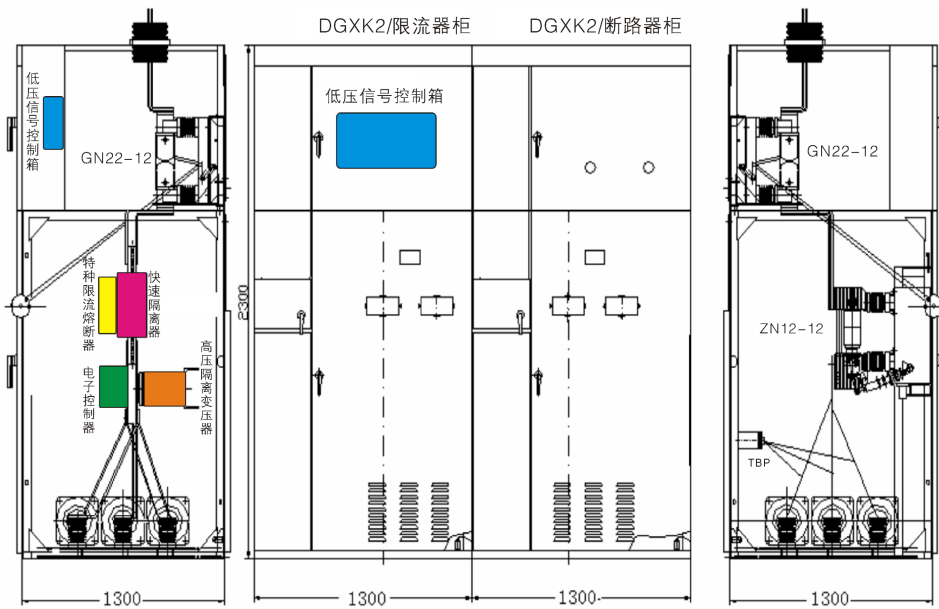
Fig6 DDX1' single-phase application(Reactor bypass)

3.2 组柜方案及实例 The Schemes To Form a Cubic And Some Examples

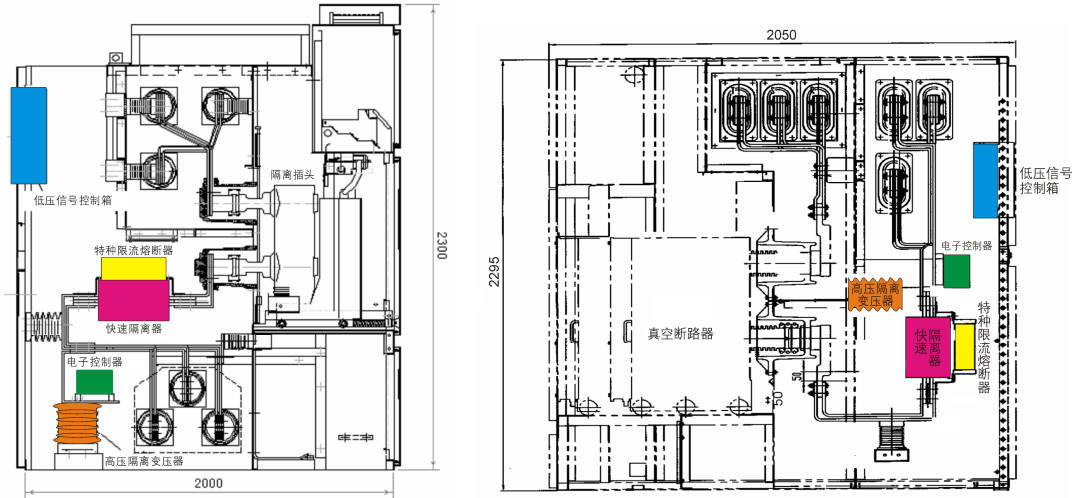
3.2.1 组柜的主接线方案 The Single Line Diagram Of The Schemes



3.2.2 典型结构实例 The Examples of Topical Structure



(a) 实例之一 Example 1



(b) 实例之二 Example 2



(c) 实物照片 Some pictures

图 7 柜体典型结构示例 Fig7 The examples of topical cubic structure

4 典型应用 The Topical Applications

4.1 DDX1用于旁路限流电抗器 (图8) DDX1 used in current-limiting reactor bypass (Fig8)

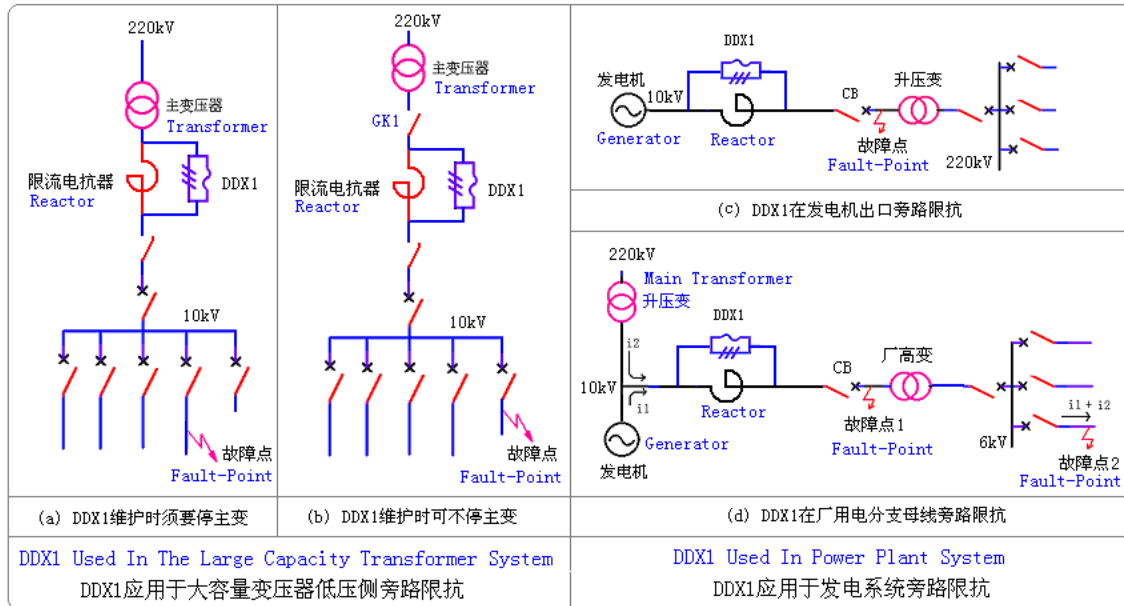


图8 (Fig 8)

DDX1 与限流电抗器并联使用的优点:

- 消除电抗器的有功损耗
- 消除电抗器阻抗引起的电压降落
- 避免电抗器的电磁场

- Avoid coppers loses of reactor
- Avoid voltage drop of reactor
- Avoid electro-magnetical field on the reactor

DDX1 in reactor bypass, advantages:

4.2 使分段母线并列运行 (图9) DDX1 used in busbar system (Fig9)

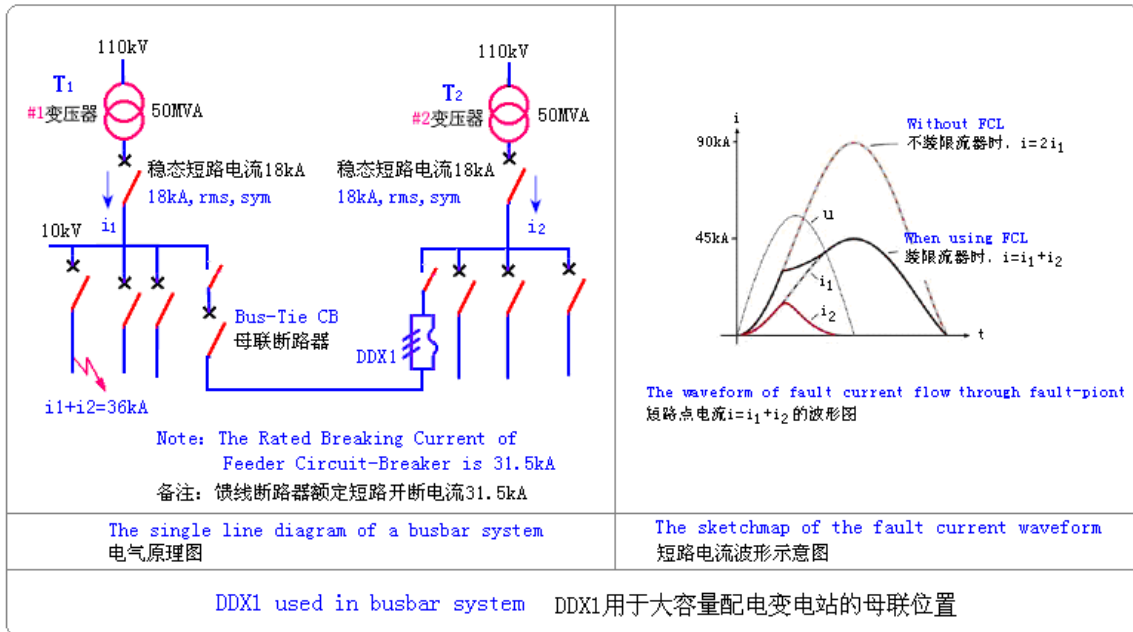


图9 (Fig 9)

在母联位置安装 DDX1 的优点:

- 改善电压质量
- 增强系统的可靠性
- 降低网络阻抗
- 优化负荷分配
- 扩容时现有的母线结构不用改动
- 增强运行方式的灵活性

DDX1 installed in bus-tie, Advantages:

- Improving power quality
- Increasing the reliability of the system
- Reduction of the network-impedence
- Optimal load flow
- Existing busbar system has not to be changed
- strengthen the operation flexibility

4.3 用于发电机组上网保护(图10)

DDX1 used in generator feeder(Fig10)

DDX1 用于发电机上网保护的优点:

- 发电机的接入不需要考虑系统的短路容量
- 不需要采用价格昂贵的发电机断路器
- 现有的母线结构不用改动

Advantages:

- Generator can be connected independent on the short-circuit capability of the system
- No need of expensive generator breaker
- Existing busbar system has not to be changed

DDX1 used in generator feeder

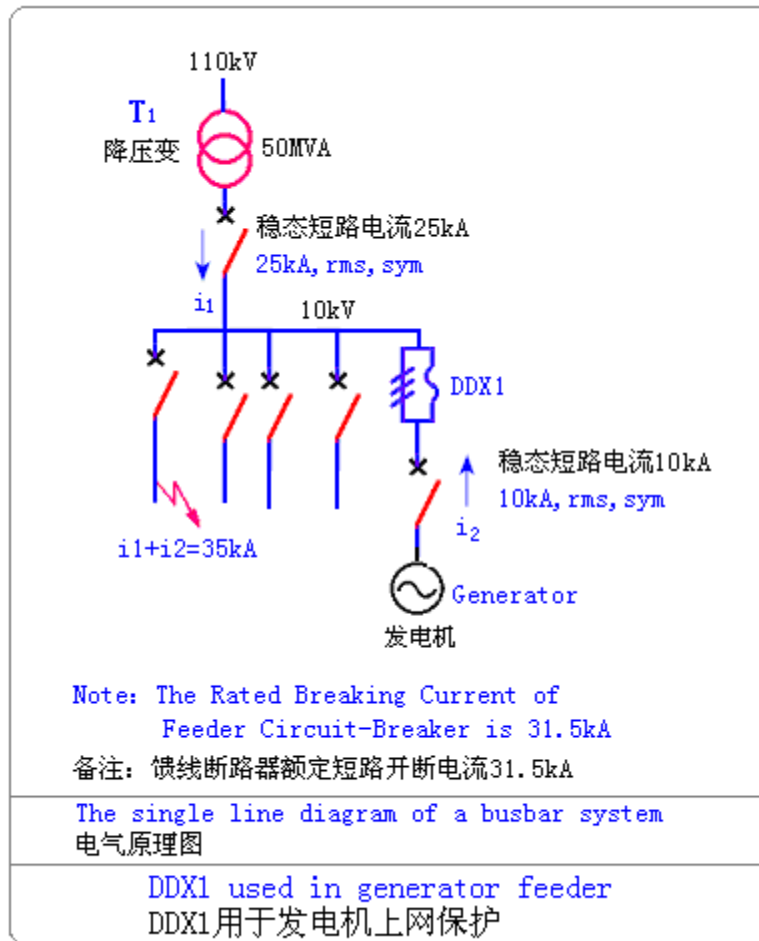


图10 (Fig 10)

4.4 用于发电系统或大容量变压器低压侧(图11)

DDX1 used in power plant system or large capacity transformer system (Fig11)

DDX1 此类用法的优点:

- 不需要采用价格昂贵的发电机断路器
- 不需要采用昂贵的封闭母线
- 不需要装设限流电抗器
- 与断路器配合实现短路电流的全面保护, 更有利于系统及主设备的安全

Advantages of this application:

- No need of expensive generator breaker
- No need of expensive isolated busbar
- No need of reactor
- By cooperated with CB, to give a more efficient protection to system and main equipment

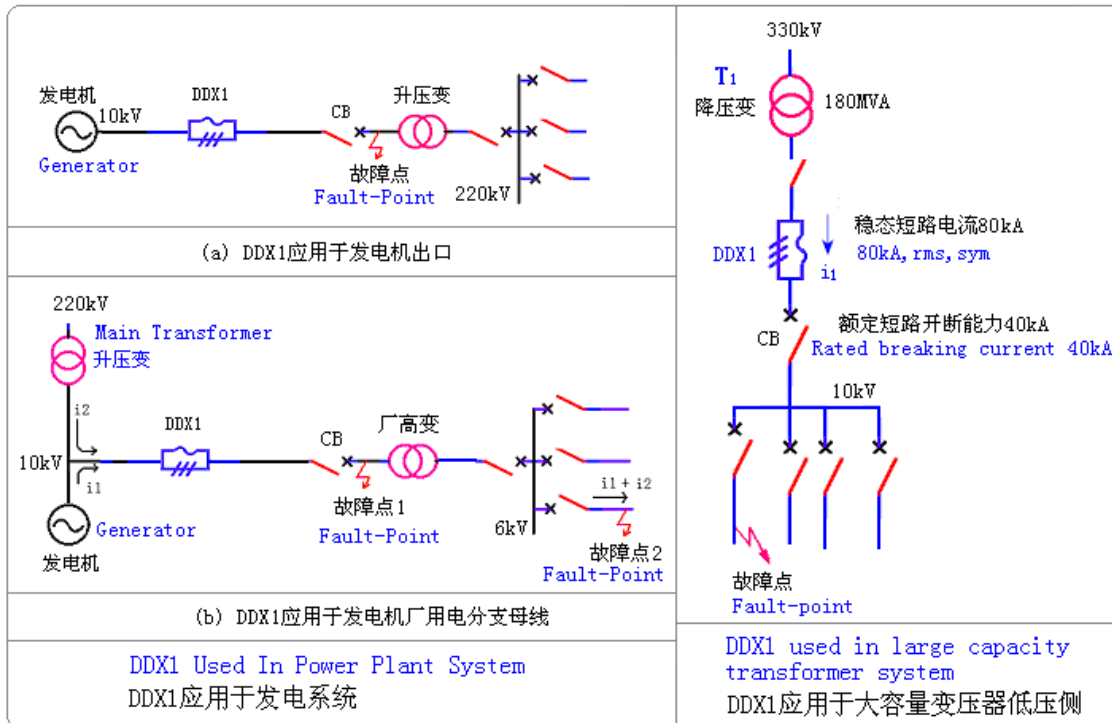


图 11 (Fig 11)

陕西蓝河电气工程有限公司

SHAANXI LANHE ELECTRIC ENGINEERING CO.,LTD.

地址：西安市高新区唐延路 25 号

Add: No.25 Tangyan Road,Xi' An, P.R.China

邮编：710075

Code: 710075

电话：029-88318201 029-84251056

Tel: +86 29 88318201 +86 29 84251056

传真：029-88318201

Fax: +86 29 88318201

E-mail: sxlhq@126.com